

# LESSON TEN: Long vowel ie

We are vowel twins i & i

**ie**

long i

How can you notice long i?

You will notice long i

by putting silent after e  
making ie.

I am never alone.

From now on

long ie

will always be

followed by the silent e.

**i**

short i

How can you notice short e?

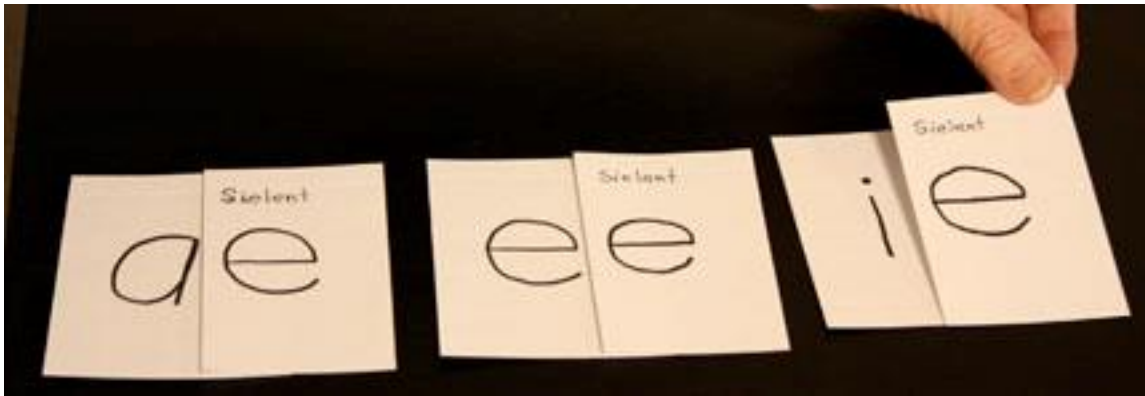
You will notice short i

I am the only vowel.

# LONG VOWEL ie

Hand lerners kards with i and e

Sae: Plaes thu e after i maeking ie.



Wie duz **ie** sae **ie**?

S**i**elent e maeks **ie** sae its leter naem.

# Long vowel **ie**

Simbol

**ie**

Kloo werds

**ies kueb**

Pikchur



The kloo werd foer long **ie** is **ies**

Sien **ie**:



Fingerspel **ies**:



Sien **ies**: miem skatching fingernaelson **ies**.



Wun liener: **ies kueb**



**Aktivite: Serve Cola with ice to learners**

**Serv Koela with ies too lerners**



**Lerner repeats: Koela with ies is twies az nies.**

**Wun liener: Koela with ies is twies az nies.**

**Sing or Chant:**

**(Hav lerners repeat after yoo until thae noe it wel enuf too doo it with yoo)**

**Mie kola with ies is twies az nies,**

**Twies az nies,**

**Twies az nies,**

**Mie kola with ies is twies as nies,**

**I liek it served that wae.**

**Pleez poer mie kola oever ies,**

**oever ies,**

**oever ies,**

**Plees poer mie kola oever ies,**

**I liek it served that wae.**

**Noet:** Thu personal I reefering too wunself is  
alwaes kaptalizd. It is thu onlee long I not folowed  
bie thu sielent e.

**Personal:** Kapital I not le or ie.

**Even** within a sentens, thu personal I is alwaes  
kapitalized.

**Noet:** Me, myself, and I.

**Mee, miessel, and I.**

# Aktivitee: Draw iez

OO

Mie iez.

OO

Kat's iez.

OO

Snaek iez.

# LONG ie PIKCHUR & SOUND PRAKTIS:

Lisen foer long ie sound in pikchurs. Hav lerners reepeat werds giving sliet emfasis too thu vowel sound.



bike

biek





ice

ies



vine

viens



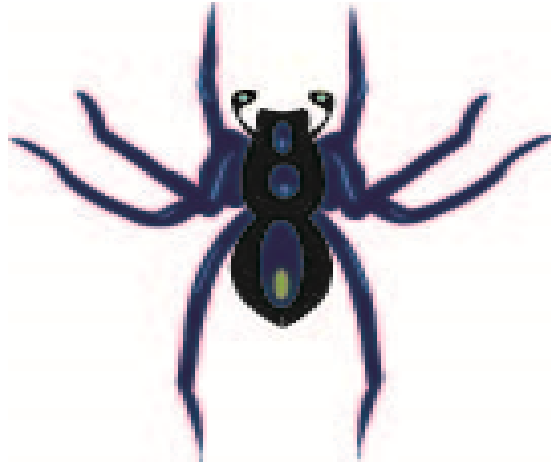
dime

diem



sign

sien



spider  
spieder

# Long Vowel: ie



Sound kloo: ie, ies

S/sound: ie, ie, ie,

**riet** in hand: **ie**

S/s wun **liener**: **Koela** with **ies** is **twies**  
az **nies**.

# Instruktor proenounses

Lerner riets:

ies

biek

kiet

bie

tie

sie

tiet

siet

sein

0

**Long vowel: ae**



**Sound kloo: ae, aet**

**Sound: ae, ae, ae**

**riet in hand: ae 8**

**Wun liener: Aemee aet aet graeps.**

**Long vowel: ee**



**Sound kloof: bee**

**Sae sound: ee, ee, ee**

**riet** in hand: **ee**

**Wun liener: Honee Beez stoer nekter in a tree .**

# Long Vowel: ie



Sound kloo: ie, ies

S/sound: ie, ie, ie,

**riet** in hand: **ie**

S/s wun **liener**: **Koela** with **ies** is **twies**  
az **nies**.



**Short singl vowel: a**



**Sound kloo: a, at**

**Sae sound: a, a, a**

**riet in hand: a**

**Wun liener: Kat in kap at bat.**

# Short vowel: e



**Sound kloof:** e, ej

**Sound;** e, e, e

**riet** in hand: e

**Wun liener:** Eg on ej.

**Konsonant: b**



**Sound kloof: b, bat**

**Sae sound: b, b, b**

**riet in hand: b**

**Wun liener: Bat thu  off thu wal.**

# Konsonant: k



**Sound kloof: k, kiet**

**Sae sound: k, k, k**

**riet in hand: k**

**Wun liener: Kiet krasht**

**Kiet smashd.**

# Konsonant t



Sound kloo: t, turtl

Sae sound : t, t, t

riet in hand: t

Wun liener: Sloe & stedee  
turtl tiem.

# Konsonant s:



**Sound kloo: s, snaek**

**Sound : s, s, s**

**riet in hand: s**

**Wun liener: Snaeks biet,  
big friet.**

# Konsonant z:



**Leter kloof: z, zoo**

**Sound: z,z,z**

**riet** in hand: **z**

**Wun liener: (Who's) Hoo's in thu zoo?**

# Proenouns werds

Lerner riets:

bie

tie

sie

siet

biet

kiet

tiet

biek

ies

iez



## TESTING:

Go to Testing spreadsheet:

- do test(s) 2C.

- Record date

- Record on spreadsheet score + or - for each word

- Also record here:

  - score

    - + \_\_\_\_\_(correct)

    - \_\_\_\_\_(incorrect)

**Alert: If learner as difficulty, assess and address problem.**

**Read and Chant:**

**Noet:** If lerner is having difikulty reecaling vowels sounds yoo  
mae hav him staet (not reed) thu vowel rul proevieded under thu  
werds. Otherwies, this is unesesaere. Thu rul is proevieded foer  
instruktor uez oenle.

*ies, ies, ies*

(long i folowed bie silent e)

*iez, iez, iez*

(long i folowed bie silent e)

*tie, bie, sie*

(long i folowed bie silent e)

*bee, seet, beet*

*set, set, bet*

*(singl, solitary lone e)*

*aet, aek, aes*

*(long a foloewed bi e silent e)*

*ad, bad, sad*

*(singl, solitary lone a)*

*kab, tak, sak*

*(singl, solietare loen a)*