

LESON TWELVE Long Vowel oe

We are vowel twins O & O

oe

long o

O

short o

Ask: Doo wee luuk aliek in shaep?

Anser: Yes, eksaktlee.

Ask: How can yoo tel thu diferens?

Anser: Ther is noe diferens.

Wee put a sielent e after thu o
too designaet thu long oe.

Long Vowel Oe:

oe

I am long vowel oe.

I am the sound of our alphabet letter name.

I am never alone.

From now on long vowel o will always be followed by

the silent e.

Hand learners cards with o and silent e.
Places the silent e after o making oe.



Ask: Wut is thu sound of **oe**?

Answer: **oe**

Ask: **Wie**?

Answer: **Silent e maeks o sae its leter naem.**

Long vowel oe

Simbol
oe

Kloow
oeld



Oeld goeld

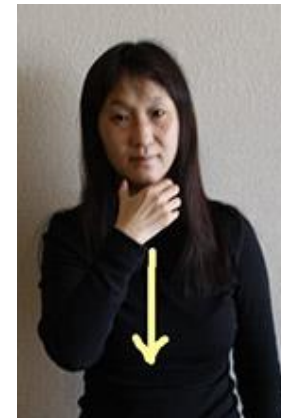
Pikchur

Thu kloow werd foer long oe is oeld .

Sien oe:



Sien oeld(beerd):



Wun liener: Oeld Goeld stoeree untoeld. (On thu insied of thu ring is thu inskription: J to M February 3, 1-03).

Read to learner: *Oh, The Places You Will Go.*
By Dr. Seuss

Ask: *Oe, waer wuud yoo goe todae?*
Wie wuud goe ther _____.

Draw: I wuud goe too _____.



Ask: Wut is thu mesej of this poester?

Anser: Noe smoeking

Hav lerners reepeat after yoo.

Then sae together.

Somthing I noe yoo noe,

Smoeking? Noe!

Smoeking? Noe!

Somthing I noe yoo noe,

Smoeking is noe guud foer yoo.

*Mi**e**m 'No**e** Smo**e**king' mesej*



Noe****



Smoe**king**

*Ma**e**k your o**e**n 'No**e** Smo**e**king' po**e**ster.*

Long oe pikchur & sound praktis:

Lerner reepeat werds slietlee emfasieling long oe.



toes

toes



coat

koet



rose

roez



sew

soe

Long Vowel oe



Sound kloo: **oe, noe**

Sound: **oe, oe, oe**

riet in hand: **oe**

Wun liener: **Oeld goeld stoeree untold.**

Introedukshun to oee

Noet: Thu oei is a combinaeshun of long oe and short i.

In thu English alfabet, oei can be speld in several diferent waes (oi, oy, uo).

It is introedusd with thu long oe beekuz boeth of its sounds oe and i hav ben taut.

Noet: oei is onlee one silabl.

Pikcher praktis: oee (oe+i)

Lisen foer sound of oei

Hav lerners reepeat werds after yoo
slietlee emfasiezing thu oei sound.



boy

boei



toy

toei



coin

koein



point
poent



foil
foeil

Vowel paer: oei



Sound kloo: oei, toei

Sound: oei, oei, oei

riet in hand: oei

Wun liener: Boei toei

Proenouns werds:

Lerner riets:

oe

koet

boet

toe

soek

toed

soe

soed

boe

kob

kot

sok

boei

toei

poeint

foeil

Long vowel: ae



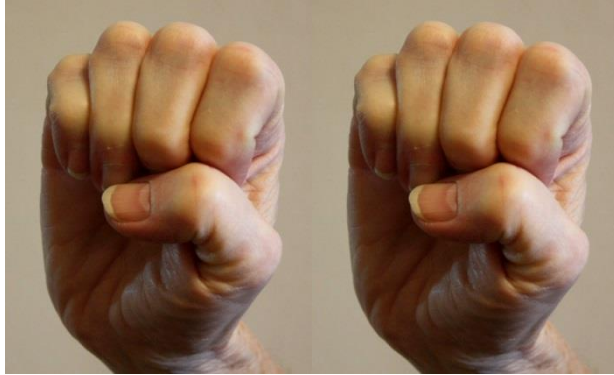
Sound kloo: ae, aet

Sound: ae, ae, ae

riet in hand: ae 8

Wun liener: Aemee aet aet graeps.

Long vowel: ee



Sound kloof: bee

Sae sound: ee, ee, ee

riet in hand: **ee**

Wun liener: Honee Beez stoer nekter in a treee .

Long Vowel: ie



Sound kloo: ie, ies

S/sound: ie, ie, ie,

riet in hand: **ie**

**S/s wun liener: Koela with ies is twies
az nies.**

Long Vowel oe



Sound kloo: oe, noe

Sound: oe, oe, oe

riet in hand: oe

Wun liener: Oeld goeld stoeree untold.

Short singl vowel: a



Sound kloof: a, at

Sae sound: a, a, a

riet in hand: a

Wun liener: Kat in kap at bat.

Short vowel: e



Sound kloo: e, ej

Sound; e, e, e

riet in hand: e

Wun liener: Eg on ej.

Short i



Sound kloo: i, it

Sound : i, i, i

riet in hand: i

Wun liener: Sit a bit

Konsonant: b



Sound kloo: b, bat

Sae sound: b, b, b

riet in hand: b

Wun liener: Bat thu  off thu wal.

Konsonant: k



Sound kloo: k, kiet

Sae sound: k, k, k

riet in hand: k

Wun liener: Kiet krashd

Kiet smashd.

Konsonant t



Sound kloo: t, turtl

Sae sound : t, t, t

riet in hand: t

Wun liener: Sloe & stedee
turtl tiem.

Konsonant s:



Sound kloo: s, snaek

Sound : s, s, s

riet in hand: s

**Wun liener: Snaeks biet,
big friet.**

Konsonant z:



Leter kloof: z, zoo

Sound: z,z,z

riet in hand: **z**

Wun liener: (Who's) Hoo's in thu zoo?

Proenouns werds:

Lerner riets:

koet

boet

toe

toet

soek

toed

soe

soed

boe

oekae

boei

toei

poeint

TESTING:

Go to Testing spreadsheet:

-do test(s) 3A.

-Record date

-Record on spreadsheet score + or - for each word

-Also record here:

-score

+ _____(correct)

- _____(incorrect)

Alert: If learner experiences difficulty assess and address.

Reed and Chant:

soe, soe, toe

(long o folowd bie sielent e)

soek, boet, koet

(long o folowd bie sielent e)

boei, toei

(long o folowd bie sielent e, folowd bie short i)

sae, saek, taek

(long a folowd bie sielent e)

tak, sak, bak

(singl, solitaere loen a)

kee, tee, bee

(long e folowd bie sielent e)

sit, bit, kit

(singl, solitaere loen e)

ies, iez, iez

(long i folowd bie sielent e)