

LESSON TOO: Short Vowel a

We R vowel twins **ae** & **a**:

Long **ae** and short **a** R printed eksaktle (exactly alike).

Hou kan yoo noe which is long **ae**?

ae

long ae

a

short a

(Chant together)

Yoo wil noe long **ae**
bie puting sielent **e** after a
maeking **ae**.

I am long vowel a
maeking thu sound of
our alfabet leter **naem**.

I am never alo**en**.

From now on long **ae**
wil alwa**es** bee
folowed bie sielent **e**.

Hou kan you noe short a?

a

short a

(Lerner repeats)

**Yoo wil noe I'm short a
I am thu loenlee vowel.**

**I am thu sound yoo heer
at thu begining of at.**

**Ther wil never bee
another vowel (a, e, i, o, u)
befoer or after mee**

Short vowel a:

Simbol

a

Kloo word

at

Pikchur



The kloo word for a is at.

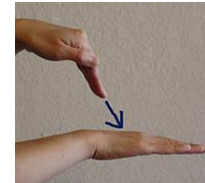


At bat

Teach: Hand sien for a:



Sien for at:



S/s: a, at

TEACHER NOTE:

Note: Teach sound a.

Review ae.

Do not instruct sounds of other letters at this time.

Note: Listen for the a (do not sae short ae but sae the short a sound of a in and, kat and hat.

Ask lerner: Wut is thu kat waering?



Kat in hat. (Sae too lerner, reepeat after mee)

Ask: Waer is thu hat?

(On thu kat)



Hat on kat. (lerner reepeat)



kat in kap (lerner reepeat)



kat, noe hat (lerner reepeats)

**Pikcher praktis: a
lerner repeats werd giving sliet emfasis too short a.**



ad (plus)



ant



hand



sad

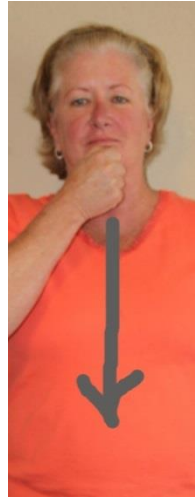


kat and hat



bat

Instruktoer: Giv eech lerner a slies of apl too eet.



Lerners sae: I aet a slies of apl

Sae: An apl ae dae keeps the doktoer awae.

Ask: Wut doo yoo think that meens?

(Apls kontaeen manee good nutrients)

Instructor: When a single, short, lone vowel is the only vowel in a word or syllable the vowel is always short (unless followed by an r).

The letter r has the power to change the sound of u vowel.

Do not share this with the learner at this time unless someone has noticed the discrepancy. Then just say the r has some power over vowels. This will be taught in lessons 20-26.

Short singl a:



Sound kloof: **a, at**

Sound: **a, a, a**

riet in hand: **a**

Sae wun liener: **Kat in kap at bat.**

Reeview:

Instruktoer: Hav lerners reepeat short vowel riems after yoo.

Eeventualee thae wil bee saeing them with yoo.

Ask: In print twins ae/a, look aliek.

Hou kan yoo noe wich wun is short a?

I'm short a,

**Ther wil never bee
another vowel (No a,e,i,o,u.)
nekst to mee.**

**I'm short vowel a
And alwaes singl .
With other vowels
I doo not mingl.**

Note: Below are two common forms used in writing and printing the letter a.

a

ɑ

The letter a in books or type is generally formed differently than the handwritten a.

(Point to the letters as named)-Both single forms of a/ɑ have the same sound.

The sound of the different forms of single a/ɑ is the same as you hear in hat and cat.

Aktivitee:

a a

Draw a hat on top of each letter a above.

Then place the eyes and mouth in the circles of the letter.

S/s: a, at

Review:

I am long vowel ae.

I am the sound of our alphabet letter naem.

I am never alone.

***From now on I will always be
followed by the silent e.***

That makes me see that I am a.

Long vowel: ae



Sound kloo: ae, aet

Sound: ae, ae, ae

riet in hand: ae 8

Wun liener: Aemee aet aet graeps.

Short single vowel: a



Sound kloo: a, at

Sae sound: a, a, a

riet in hand: *a*

Sae wun liener: Kat in kap at bat.

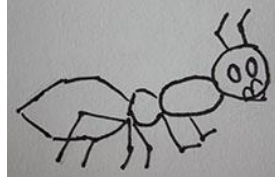
Aktivitee:

werd

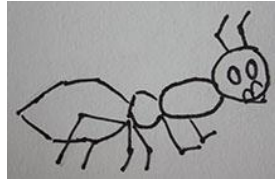
Pikchur

Sien

ant



ant



ant



Sae werd, pikchur and sien.

Sae and sien:

a



at

